

# MAC FAUCETS

## TiO-34 Electronic Faucet and Soap Dispenser in one body

*Available In Twenty + Finishes*



### Package Includes

*Spout and hardware*

*Faucet control unit*

*Soap dispenser pump unit*

*800ml Soap Bottle*

*Batteries Pre-installed*

*All hardware necessary for  
satisfactory installation*

ANSI A112.18.1M

CSA Standard B125,

1.5 U.S GPM

Complies with NSF  
Standard 61, Section 9

### Featuring:

- **Solid Brass Body**
- **Dispenses Standard liquid Soap**
- **Flow Adjustment Capability**
- **Resin Encased Control Electronics**
- **Battery Powered, Optional AC Power**
- **Available in Twenty + Finishes**
- **Requires Single Hole in Countertop for Installation**
- **State of The Art Valving and Pumping Systems**
- **US Green Building Council 1/4 Gallons per Cycle Compliant**

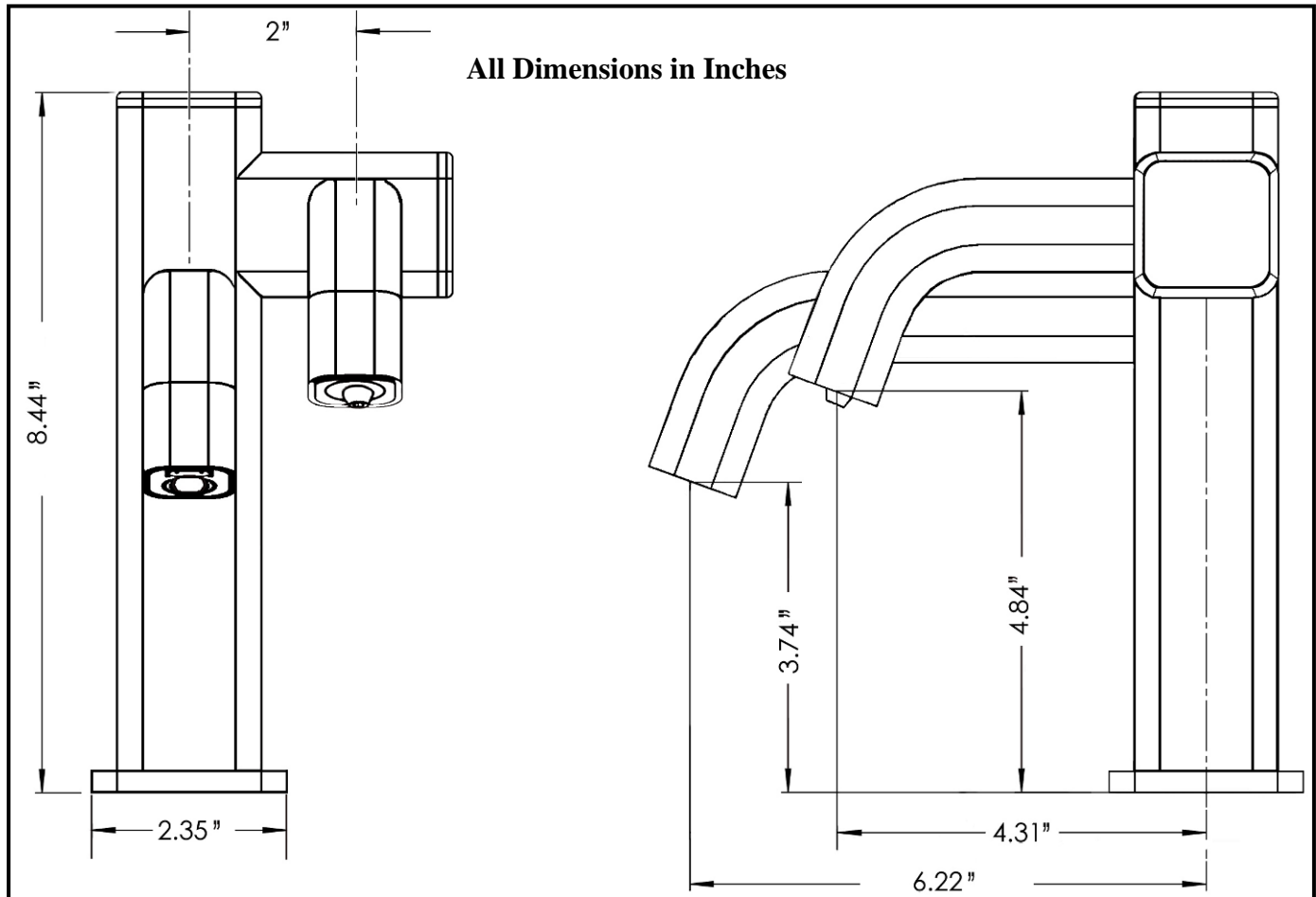


### Optional Equipment:

- Lavatory Drain, Grid and Pop Up Type
- Adjustable under the sink mixing valve
- Large capacity soap container
- Remote control
- AC Adapter (2 are needed)

## TiO-34 SPECIFICATIONS AND DIMENSIONS

SPOUT:	SOLID BRASS CONSTRUCTION.
POWER:	BATTERIES. OPTIONAL AC ADAPTER
FAUCET SOLENOID VALVE:	LOW POWER CONSUMPTION MAGNET LATCHING
SOAP PUMP:	NOISE-FREE PERISTALTIC PUMP SYSTEM
SENSOR TYPE:	ACTIVE INFRARED, SELF-ADJUSTING
SENSING RANGE:	ADJUSTABLE WITH <b>OPTIONAL REMOTE CONTROL</b>
RESPONSE TIME:	0.3 SECONDS
MAXIMUM RUNNING TIME:	30 SECONDS
AERATOR:	<b>0.5 GPM IN CA - 1.5 GPM NATIONAL - OTHER OPTIONS AVAILABLE</b>
WORKING SOAP:	STANDARD LIQUID SOAP. NO GRIT (INDUSTRIAL) SOAP
SOAP BOTTLE CAPACITY:	ONE QUART STANDARD. OPTIONAL ONE GALLON CONTAINER
COUNTER ACCOMMODATION:	STANDARD. PLEASE VIEW ROUGH-IN DRAWINGS BELOW

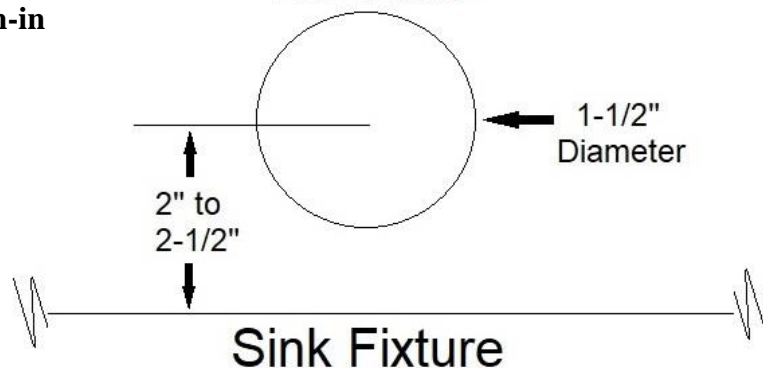


**Countertop  
Thickness:  
Up to 2-1/2"**

**Available:  
Extra Long  
Shanks for  
Thicker  
Countertops  
Please call  
before  
ordering**

**Rough-in**

**TiO Hole**



**MAC FAUCETS** California, USA

[www.macfaucets.com](http://www.macfaucets.com) Tel 866 558 3200 Fax 310 919 3073 Email [Info@macfaucets.com](mailto:Info@macfaucets.com)